

Schofields , NSW

 4  2  1

## FREESTANDING 4 bedroom Townhouse with garage plus car space

Location! Location! Location! FREESTANDING 4 bedroom Townhouse with garage plus car space.

This near new FREESTANDING four-bedroom home in the heart of Schofields. Walking distance to Schofields train station, new shopping village, public bus stop, parks and schools etc. Short driving to Tallawong Metro Station, Rouse Hill Town Centre and Sydney Business Park Zone

- Contemporary dual-level design
- 2 bathrooms plus 3rd downstairs guest toilet
- Kitchen with Stone bench top & stainless steel appliances, including dishwasher
- Ensuite and built-in robe to the master suite
- Polished floor tiles in living & kitchen zones
- Reverse cycle climate control

**\$650 pw**

**Type:** Townhouse  
**Date Available:** 25/11/2022  
**Land:** 195 m2  
**Bond:** \$2600

**Chris Brown**

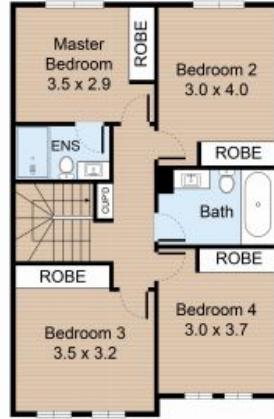
0420 511 610

# 46 Grima Street, Schofields

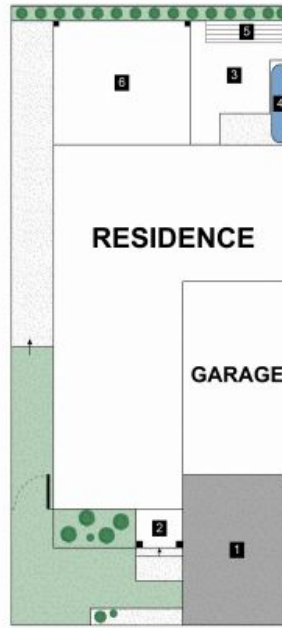
4 Bed 2 Bath 1 Car



GROUND FLOOR



FIRST FLOOR



SITE PLAN

## LEGEND

1. Driveway
2. Porch
3. Patio
4. Water Tank
5. Clothes Line
6. Alfresco

Internal : 130m<sup>2</sup>  
External : 24m<sup>2</sup>



All information contained herein is gathered from our 3D scanned tours via Matterport. Whilst the 3D scanning technology is very accurate we cannot guarantee its accuracy and interested parties should rely on their own enquiries.