



Rouse Hill , NSW

Proximity Rouse Hill / Luxury Apartments in an Ideal Location

Positioned as the best development in the Rouse Hill Town Centre precinct, Proximity provides you with the perfect location, for the ultimate combination of accessibility and lifestyle. Proximity is just footsteps away from Rouse Hill's vibrant town centre and less than a 3 minutes' walk away to Rouse Hill Metro station. Just minutes from your home you'll also have full access to nearby Mungerie House facilities, including a tennis court, swimming pool, and communal entertaining space. Not only are you on the edge of acres of green nature, you're also a stone's throw from a life of urban convenience. Set in a truly unique location with beautiful established trees, serene park-like surrounds and neighbouring heritage buildings. Nature strips connect directly from site to the nearby riding and walking trails, reserves and parks. Surrounded by free-standing two-level homes, you can buy knowing your views will never be built out. Looking for more? You'll find it at Proximity! Why Compromise?

Contact Agent

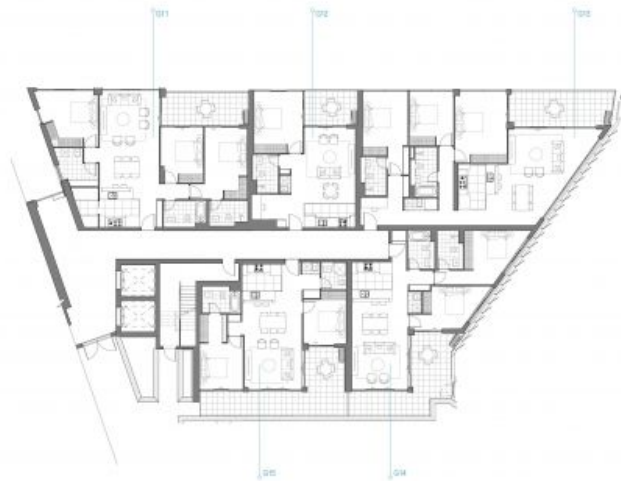
Type: Apartment

Phil Batten

0452 460 511

Chris Brown

0420 511 610



TREEHOUSE
GROUND
 BUILDING 5



PROXIMITYROUSEHILL.COM.AU
 1300 031 262



PROXIMITY

Updated January 2021. Note: this plan is a guide only and does not constitute an offer or contract. Please note that changes may be made to the development during construction and elements such as areas, fittings, fixtures etc may change without notice. All parties should rely on their own investigation to validate this information as it is not guaranteed. No liability will be accepted for any inaccuracy or misstatement.

9 Civic Way, Rouse Hill NSW