



Marsden Park , NSW

 4  2  2

Great Price!!! Get in Quick, Won't Last!!!!

New Vision Real Estate is proud to present this modern masterpiece located in the heart of The Elara Estate.

This Full Turnkey Home & Land package is perfect for the first home buyer wanting to get their foot in the door or a perfect investment. This innovative design offers:

- 4 Spacious bedrooms
- Master bedroom with Ensuite and WIR
- Open plan living
- Ceramic tiles to entry, kitchen and all wet areas, carpet to all remaining areas.
- 900mm cooktop and oven 2x600mm/1x900mm in accordance with kitchen design
- Air conditioning
- Driveway
- Fencing
- Letterbox
- Landscaping
- And much more

Location:

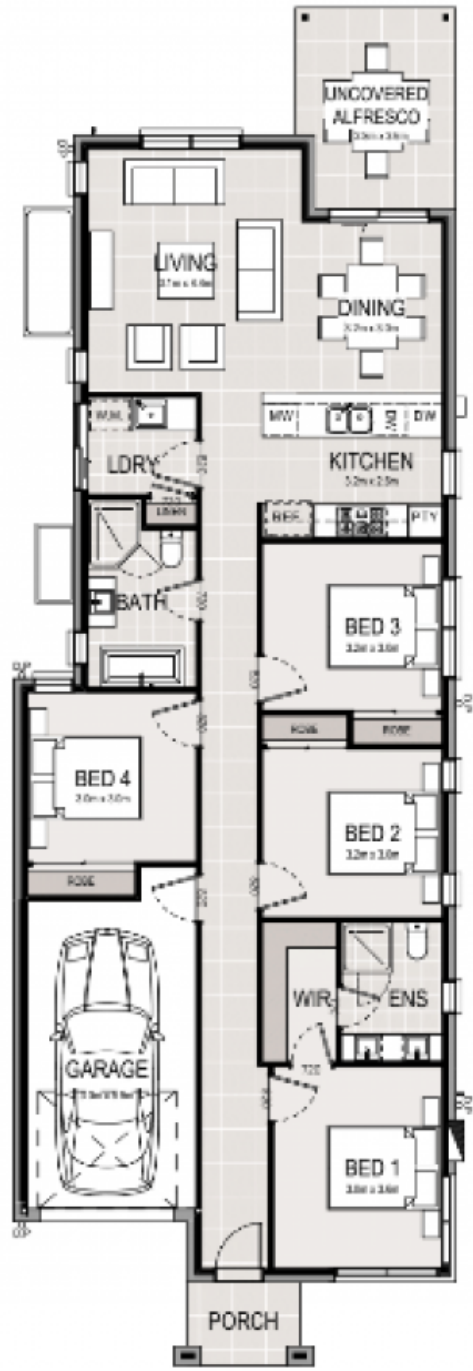
- 5 Minutes to Sydney Business Park
- 5 Minutes to Norwest Business Park
- 10 Minutes to Schofields Train Station
- 14 Minutes to Rouse Hill Town Centre
- 17 Minutes to Westpoint Shopping Centre, Blacktown
- 30 Minutes to Parramatta
- Less than an hour by train to Sydney CBD

Sold by Chris Brown - 0433 181 544

Type: Land
Sold Date: 17/08/2020
Land: 300 m2

Chris Brown

0420 511 610



Marsden Park NSW